

JPS Hybrid Learning Model



Jamestown Public Schools students and staff will return for the 2020-21 school year in a Hybrid Learning Model. Based on guidance from the State Department of Health and State Education Department, along with stakeholder feedback, the Hybrid Model aims to maximize in-person instruction while safeguarding the health and safety of students and staff. It also includes a heavy focus on social-emotional and academic supports with time built in each week for planning, professional development, student feedback, and small group support. As all students will be learning remotely on Friday, this will also allow for deep cleaning and sanitizing of classrooms and schools.

On defined days, some students will learn remotely and others will learn at school. This will limit the number of students in classrooms, on buses and in the hallways at one time, in order to maintain safe physical distancing requirements.

This plan may subject to change dependent on the Governor's approval.

Grades PK-4

**STUDENTS ATTEND IN-PERSON FOUR DAYS PER WEEK,
MORNING OR AFTERNOON.**

- **Group A** attends **Monday-Thursday mornings**; remote learning takes place each afternoon.
- **Group B** attends **Monday-Thursday afternoons**; remote learning takes place each morning.
- **Group C** includes high needs students who attend full days, Monday-Thursday.
- **Group D** includes students whose parents request full-time distance learning at home.
- Fridays are reserved for remote learning for all students.
- Remote learning may include scheduled video conferencing or recorded lessons and independent work time.
- Schools will mail student group assignments by **August 24**. Requests to change groups may be considered based on family circumstances.
- Requests for full-time distance learning (Group D) must be submitted by **August 21** at <http://jpsny.org/remote>.

Elementary Hybrid Schedule

		Monday	Tuesday	Wednesday	Thursday	Friday
Group A	AM	In-Person	In-Person	In-Person	In-Person	Remote
	PM	Remote	Remote	Remote	Remote	Remote
Group B	AM	Remote	Remote	Remote	Remote	Remote
	PM	In-Person	In-Person	In-Person	In-Person	Remote
Group C	AM	In-Person	In-Person	In-Person	In-Person	Remote
	PM	In-Person	In-Person	In-Person	In-Person	Remote
Group D	AM	Remote	Remote	Remote	Remote	Remote
	PM	Remote	Remote	Remote	Remote	Remote

JPS Guiding Principles for Reopening Schools

Ensure the safety & health of students & staff



Provide students, staff & parents/families clarity & support for reopening schools



Deliver high-quality instruction to students regardless of the delivery models



Hybrid Learning Model



Grades 5-9

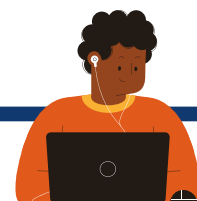
IN-PERSON INSTRUCTION TWO MORNINGS EACH WEEK, REMOTE INSTRUCTION THE REMAINDER OF THE WEEK

- **Group A** attends **Monday & Wednesday morning**; remote learning takes place Tuesday & Thursday and each afternoon.
- **Group B** attends **Tuesday & Thursday morning**; remote learning takes place Monday & Wednesday and each afternoon.
- **Group C** includes high needs students who attend full days, Monday-Thursday.
- **Group D** includes students whose parents request full-time distance learning at home.
- Fridays are reserved for remote learning for all students.
- Remote learning may include scheduled video conferencing or recorded lessons and independent work time.
- Schools will mail student group assignment by **August 24**. Requests to change groups may be considered based on family circumstances.
- Requests for full-time distance learning (Group D) must be submitted by **August 21** at <http://jpsny.org/remote>.

Grades 10-12

REMOTE INSTRUCTION MONDAY THROUGH FRIDAY

- **Group C** includes high needs students who attend full days, Monday-Thursday. Fridays are reserved for remote learning. Families will be notified by JHS if their child is assigned to Group C.
- **Group D** includes all remaining students in grades 10-12 who will receive full-time remote instruction.



Middle & High School Hybrid Schedule

		Monday	Tuesday	Wednesday	Thursday	Friday
Group A (Gr 5-9)	AM	In-Person	Remote	In-Person	Remote	Remote
	PM	Remote	Remote	Remote	Remote	Remote
Group B (Gr 5-9)	AM	Remote	In-Person	Remote	In-Person	Remote
	PM	Remote	Remote	Remote	Remote	Remote
Group C (Gr 5-9) (Gr 10-12)	AM	In-Person	In-Person	In-Person	In-Person	Remote
	PM	In-Person	In-Person	In-Person	In-Person	Remote
Group D (Gr 5-9) (Gr 10-12)	AM	Remote	Remote	Remote	Remote	Remote
	PM	Remote	Remote	Remote	Remote	Remote

NEED MORE INFORMATION ?

Please visit
<http://jpsny.org/reopening>
 for
**Frequently Asked Questions
 & Fact Sheets**
 on school meals, cleaning
 procedures, health screening,
 face masks & more.

FULL-TIME DISTANCE LEARNING OPTION:

- Parents may request the option of full-time distance learning (Group D) as an alternative to the Hybrid Schedule for Groups A, B, or C.
- We may not be able to approve all requests for distance learning, subject to the availability of staff.
- Distance learning will follow the same instructional schedule as the Hybrid Model. Specific daily schedules will be defined by the school.
- Distance learning will include scheduled video conferencing or recorded lessons and independent work time.
- Daily attendance and participation are required for distance learning.
- Families requesting distance learning must be able to provide their own internet access.
- Families must commit to distance learning through **February 1, 2021**
- School administration may require in-person learning if all requirements of distance learning are not met.
- Requests for full-time distance learning must be submitted by **Friday, August 21** at <http://jpsny.org/remote>.

